

DAILY REPORT #42 – DORIS NORTH INFRASTRUCTURE/ NORTH DAM

Prepared by:	Murray McGregor Iozsef Miskolczi	Date:	2012.02.16
Reviewed by:		Project #:	1CH008.058.0320
Role	Company	Personnel – Position	On Site
Client	Hope Bay Mining Limited (HBML)	Angela Holzapfel – ESR Compliance Manager David Vokey – ESR Coordinator Don Ethelston – HSLP Advisor Dean Wold - Safety Jill Turk – ESR Coordinator Katsky Venter – ESR Manger Michelle Tanquay – ESR Site Manager Stirling Kelly – HSLP Advisor	No No No No Yes No Yes Yes
	JDS	Lloyd Jackson – Mechanical Superintendent Doug Fielding – Construction Manager Ishan Fechter – Construction Coordinator Jerry Graham – Construction Manager Kevin Whieldon – Project Coordinator Mark Valeriote – Construction Manager	Yes In Yes Out No Yes
Engineering Design Consultants	SRK Consulting (Canada) Inc.	John Kurylo – Site Engineer Megan Miller – Site Engineer Lawrence Borowski – Site Engineer Murray McGregor – Site Engineer Iozsef Miskolczi – Site Engineer	No No No Yes Yes
	EBA Engineering Consultants Ltd.	Jeff Orr – Project Manager Jennifer Stirling – Geologist Thomas Bradshaw – Junior Engineer Ernest Palczewski – Geologist	No No Yes Yes
Earthworks Contractor	Nuna Logistics	Ben Vostermans - Foreman Bradford Watkin – QC Manager Doug Haverland – Area Superintendent Gary Sodhi – Field Engineer Georges Cornelissen – Survey Manager Jeff Roberts - Surveyor Jim Cardinal – Foreman Kevin Oakes – Project Engineer Kevin Kozdrowski – Foreman Kyle Kuntz – Project Engineer Margaret Caley – Surveyor Matt McKay – Civil Supervisor Mike MacMaster – Surveyor Mike Price – Field Engineer Nick Stoneberger – Superintendent Rick Peter – Foreman Ron MacMaster – Surveyor Simon Chipper – Civil Supervisor Jordan Gunter – Foreman	Out No Yes Out In Out Yes No Out Yes Yes Yes In In No Out No No In
External Distribution List:	SRK: Maritz Rykaart, Lowell Wade, Seema Kang, Silkie Wong EBA: Robert Zschuppe Nuna: Chris Petrovic JDS: Bob Prince-Wright, Calvin Goldschmidt HBML: Dave Power, Gerry Benson		
This Construction Daily Report is produced as an internal communication document between SRK site and head office staff. Any distribution of this report outside of SRK is done as a courtesy, and the information contained in this report are for information only to those external parties.			

WEATHER (ROBERTS BAY)

<http://www.wunderground.com/weatherstation/WXDailyHistory.asp?ID=INUNAVUT3>

Temperature/Wind Chill (°C)	6AM: -31/-34	12PM: -28/-32	5 PM: n/a	12 AM: -30/-33
Precipitation (mm)	Rain: None		Snow: None	
Conditions	Day Shift: Warm, getting colder throughout the day, cloudy with reduced visibility.		Night Shift: Calm to moderate wind. Blowing snow. Clear sky. Faint Northern lights.	
Daily norms (°C)	24 hour high: -26.4		24 hour low: -31.8	

HEALTH, SAFETY AND ENVIRONMENT

- Iozsef Miskolczi and Thomas Bradshaw attended the Nuna evening toolbox meeting.
- Ernest Palczewski attended the daily toolbox meeting.
- Iozsef Miskolczi attended the Site Safety Refresher.

COMMENTS, CORRESPONDENCE AND ACTIVITIES**DAILY MEETING WITH NUNA AND HBML TEAM:**

- The daily meeting was attended by ADCO, Newmont [Michelle Tanquay, Sterling Kelly], Nuna [Doug Haverland, Kyle Kuntz], JDS [Doug Fielding, Mark Valeriote, Ishan Fechter], and SRK [Murray McGregor]

Topic	Status
Health and Safety and Environment	<ul style="list-style-type: none"> • Safety listed numerous incidents that have occurred in the recent weeks; lots of the big items are being well managed, but safety encourages everyone to pay close attention to everyday hazards. • ESR requests that a double trailer at the vent raise be returned to camp; JDS and Nuna will investigate where it should be moved.
North Dam	<ul style="list-style-type: none"> • SRK reported cleaning above the liner, snow removal and more lab tests are complete. • SRK stated that a new batch of trial placements took place on the FCP pad last evening. • Nuna plans to continue cleaning, snow clearing and prepping at the dam.
Water Management Structures	<ul style="list-style-type: none"> • Nuna stated they will be leveling the key-trench at the diversion berm. • Nuna indicated that an excavator will be mobilized to Sump #1 in order to set up drill pads. • Nuna stated that the drill will be moving to Quarry 2 today.
General	<ul style="list-style-type: none"> • Crusher repairs continue at the start of dayshift today. • Three personnel remain from Williams Wireless.

SURVEY:

Required	<ul style="list-style-type: none"> • As-built survey of Transition placed Feb 12, 2012 • As-built survey of ROQ placed Feb 12, 2012 • As-built survey of Transition placed Feb 13, 2012 • As-built survey of ROQ placed Feb 13, 2012 • As-built survey of Transition placed Feb 15, 2012 • As-built survey of ROQ placed Feb 15, 2012
Data Received	<ul style="list-style-type: none"> • As-built survey of Transition placed Feb 11, 2012 • As-built survey of ROQ placed Feb 11, 2012

Outstanding	•
Upcoming	<ul style="list-style-type: none"> • Survey of FCM after placement (on going). • Survey of Doris North Diversion berm excavation. • Survey of exposed GCL surface

NORTH DAM/FROZEN CORE PLANT PAD:

Multi-Bead Thermistors

- No activity.

Frozen Core Plant

Dayshift

- Plant was not started until 4:00PM for a second set of test batches.
- One load was sent to reject; then six half loaded trucks were sent out with increasing moisture contents to be placed on the FCP pad.
- Test batches were visually inspected, but left for nightshift to complete testing.

Nightshift

- No activity, no FCM was produced.
- No frozen core plant operator was available on nightshift.
- Frozen Core material was hauled from the crusher and stockpiled at the FCP.
- Compaction was measured on the test pour plots using the nuclear densitometer. The test pads were compacted with 4 passes of static compaction and 4 passes of vibratory compaction. Density measurements were taken before and after compaction.
- Samples for moisture content tests were collected from the test pads.
- One single bead thermistor was installed in Test Pad #6.

Dam Shell

Dayshift

- No activity.

Nightshift

- Snow was removed from the downstream slope of the ROQ.

Key Trench/ Central Core

Dayshift

- No activity.

Nightshift

- No FCM placement.
- Removal of the frozen 5/8 crush from above the HDPE liner continued. The HDPE liner was exposed to the north-east end of the key trench.
- A wider swath of 5/8 crush was partially removed from over the HDPE liner between stations 1+70 and 1+85 using the CAT 345 excavator with tiger teeth.
- The single bead thermistors were showing temperatures well below -2 degrees C.
- The CAT 345 excavator with equipped with tiger teeth was used to remove the 5/8 crush placed in the south-west end of the key trench to expose the frozen core placed last year.
- Cleaning of the placed frozen core was performed using the skidsteer equipped with the broom attachment.
- The placed core elevation of 34.3 m was marked up by survey on the north-east end of the key trench. The top elevation of the upper GCL is 35.0 m.
- Four frozen core samples were collected.

Field Geotechnical Testing, Laboratory and Sampling**SINGLE BEAD THERMISTOR STATUS**

Installed Today			Active			Destroyed / Abandoned		
ID	Station	US/DS/Center	ID	Station	US/DS/Center	ID	Station	US/DS/Center
			SB13	1+35	Center			
			SB7	1+72	U/S			
			SB4	1+40	Center			
			SB5	1+10	Center			
			SB12	0+60	Center			

- A summary of today's material testing progress is presented in the tables below.

PARTICLE SIZE DISTRIBUTION SUMMARY

Collected	Testing In Progress	Completed
None		

MOISTURE CONTENT SUMMARY

Collected	Testing In Progress	Completed
HB12-FCP-CORE-MC123-QA-20120216		HB12-FCP-CORE-MC123-QA-20120216
HB12-FCP-CORE-MC124-QA-20120216		HB12-FCP-CORE-MC124-QA-20120216
HB12-FCP-CORE-MC125-QA-20120216		HB12-FCP-CORE-MC125-QA-20120216
HB12-FCP-CORE-MC126-QA-20120216		HB12-FCP-CORE-MC126-QA-20120216
HB12-FCP-CORE-MC127-QA-20120216		HB12-FCP-CORE-MC127-QA-20120216
HB12-FCP-CORE-MC128-QA-20120216		HB12-FCP-CORE-MC128-QA-20120216

DRILLED CORE

Collected	Testing In Progress	Completed
HB12-ND-CORE-DC36-20120216		
HB12-ND-CORE-DC37-20120216		
HB12-ND-CORE-DC38-20120216		
HB12-ND-CORE-DC39-20120216		

DORIS NORTH CAMP:

- Cat 345 excavator completed some mucking and snow clearing.
- Cat 330 excavator sloped areas of the key-trench and ROQ in preparation for liner placement.

QUARRY #2:

- Crusher underwent maintenance. No new samples were taken.

GENERAL:

- Preventative maintenance was performed on the core drilling machine, and a new barrel was installed.

PHOTOS:



Photo 1: Progress photo of North Dam from photo point 1. ~SSE view.



Photo 2: Progress photo of North Dam from photo point 2. ~NW view.



Photo 3: Progress photo of North Dam from photo point 3. ~NE view.



Photo 4: Last day's placement. Surface moisture has crystalized after placement.



Photo 5: Small amounts of 5/8 crush imbedded near exposed liner.



Photo 6: Doris North Diversion Berm looking east toward the east tie-in. Tundra and ROQ has been sloped. Bottom of the key-trench is free of excessive debris.



Photo 7: Photo looking down the diversion berm key-trench.



Photo 8: View of Tail Lake road looking west. Weather was sunny with moderate winds.



Photo 9: Second set of trial placements near the reject pile on the Frozen Core Plant Pad.



Photo 10: The CAT 345 excavator equipped with tiger teeth is removing the 5/8 crush in the south-west corner of the key-trench.

FIGURES:

Figure 1 – North Dam Progress – February 16th Dayshift

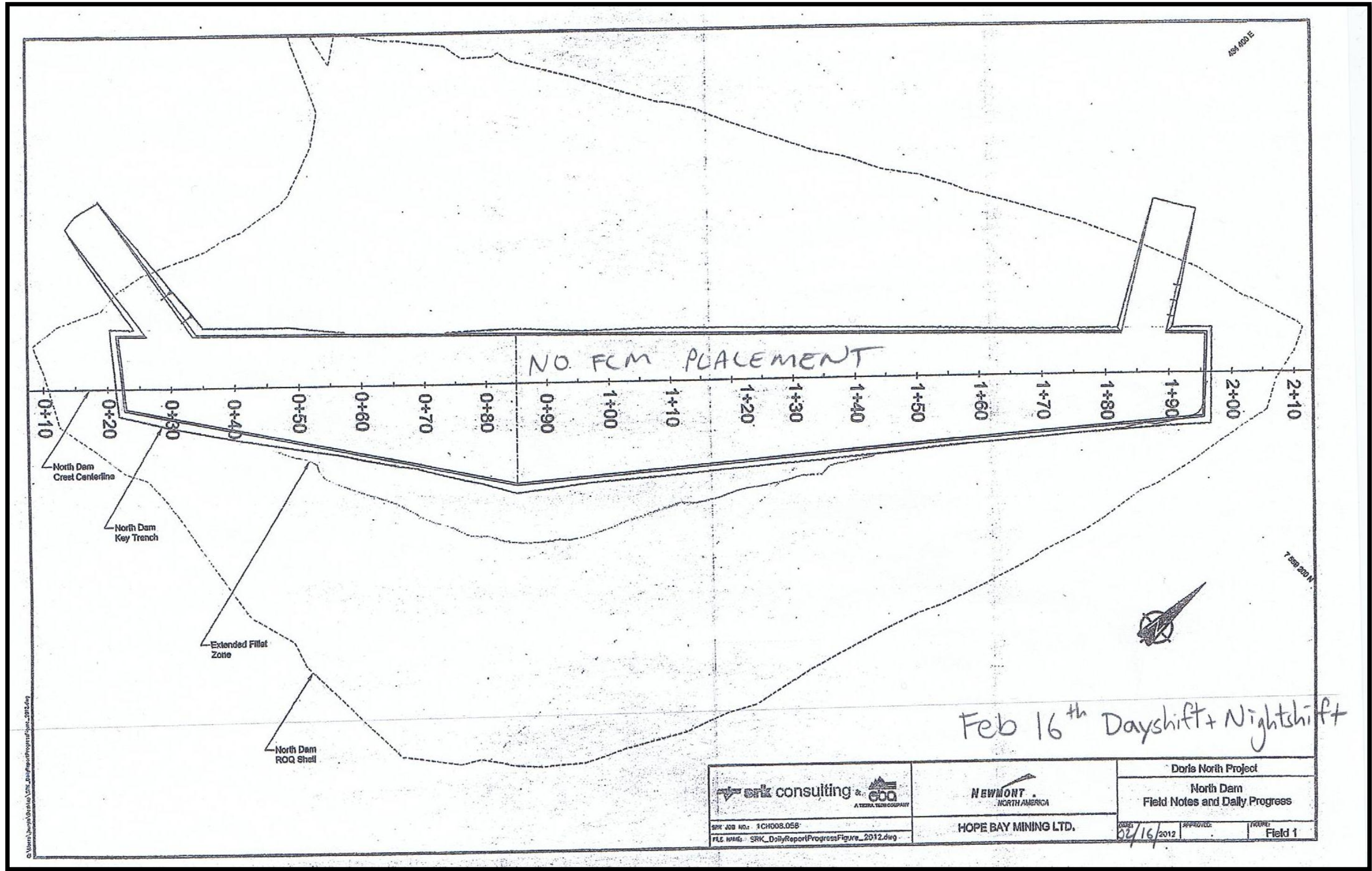


Figure 2 – North Dam Progress – February 16th Nightshift

